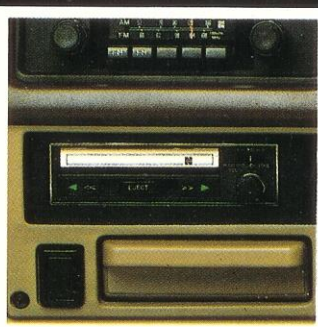
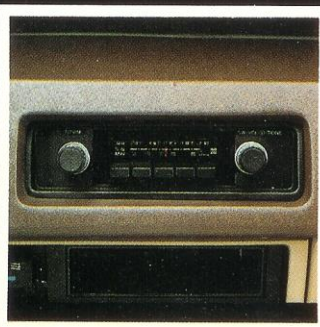
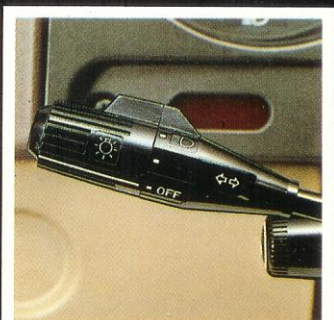
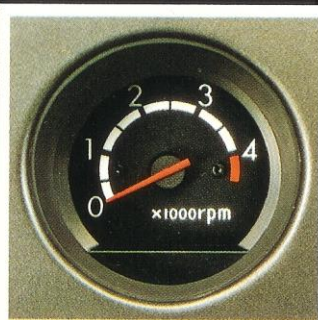
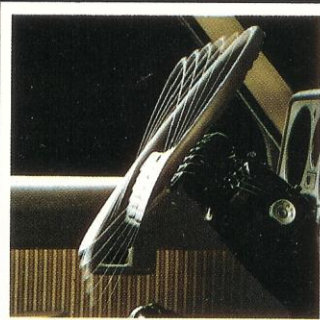
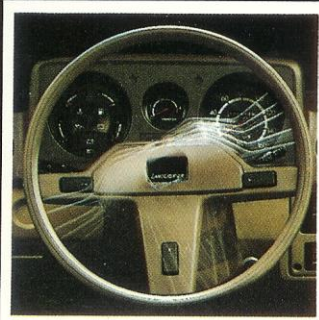


LAND CRUISER 4WD STATION WAGON



4WD.com.au





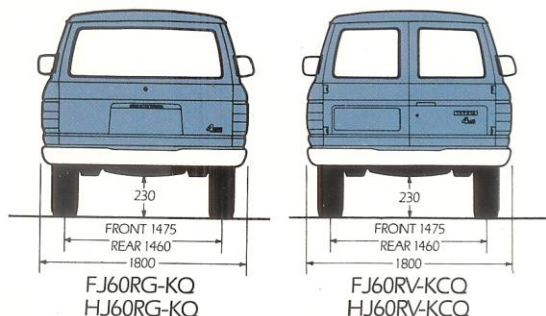
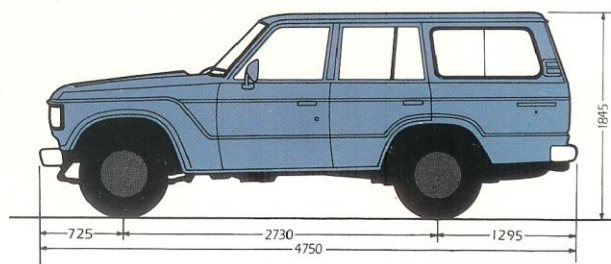
It's got the creature-comforts you miss in other 4 Wheel drives, loads more style and city-slick handling. And it's as rugged as anything you'll meet in the country.

Please yourself. The new Land Cruiser Station Wagon offers full passenger-car style and comfort with 4 Wheel Drive. Nippondenso air-conditioning is available as an optional extra. Now real versatility is yours. On-road and off-road. For work or leisure. And all without compromising comfort.

Spread out in the spacious passenger-car interior. Get the feel of the fully-upholstered seating throughout, reclining bucket-type in front. Note the driver positioning adjustments to seating and steering wheel that allow you to minimise fatigue. Note the quieter interior. The larger curved glass windows, that maximise room and visibility. The passenger-car dashboard, that's easy to read, and set low to enhance visibility. The easily-reached controls.

Once you've got into it you'll just have to take it out for a test drive. The new 4-WD Land Cruiser Station Wagon. In petrol or diesel. You'll buy it for more than the interior.

LAND CRUISER 4WD STATION WAGON Specifications



November 1980 prices and specifications subject to change without notice.



MODEL

Deluxe Station Wagon G
(With upper & lower rear gate)
Petrol Powered – FJ60RG-KO
Diesel Powered – HJ60RG-KO
Standard Station Wagon
(With swing out back doors)
Petrol Powered – FJ60RV-KCQ
Diesel Powered – HJ60RV-KCQ

AXLES

Front: Fully floating hypoid gear drive, incorporating Burfield constant velocity coupling
Capacity: 1300 kg
Rear: Fully floating, hypoid gear drive
Capacity: 2500 kg
Axle Ratio: 4.111 front & rear

BRAKES

Service Brakes: Hydraulic internal expanding rear drum brakes & front disc with tandem master cylinder – vacuum booster & P&B valve.

Diameter: Front disc: 302 mm
Rear drums: 295 mm

Lining Area: Front: 225 cm²
Rear: 710 cm²
Total: 935 cm²

Parking Brake: Mechanical internal expanding (drum brakes) – floor mounted lever.

CLUTCH

Type: Single dry plate – diaphragm spring pressure plate – hydraulically operated
Facing Dia: 275 mm
Facing Area: 706 cm²

Cooling System: Water cooled by centrifugal pump – radiator reserve tank – fluid coupling fan

Coolant Capacity
Petrol Engine: 16.5 Litre
Diesel Engine: 15.4 Litre

DIMENSIONS

Wheelbase: 2,730 mm
Tread: Front: 1,475 mm
Rear: 1,460 mm
Overall: Length: 4,750 mm
Width: 1,800 mm
Height: 1,845 mm
Ground Clearance: 230 mm
Angle Of: Approach: 37°
Departure: 19°

ELECTRICAL SYSTEM

Battery: N70Z – 12 volt 70 A.H. – Low maintenance
Alternator: 12 Volt 480 watt
Hazard warning lights.

ENGINE

(Petrol)
Model: Toyota 2F – 6 cylinder in-line, 4 cycle O.H.V.
Bore & Stroke: 94.0 x 101.6 mm
Piston Displacement: 4230 cc
Compression Ratio: 7.8:1
Air Cleaner: Cyclone type
Power SAE Nett: 96kW @ 3600 rpm
Torque SAE Nett: 274Nm @ 1800 rpm

ENGINE

(Diesel)
Model: Toyota 2H – 6 cylinder in-line, 4 cycle O.H.V.
Bore & Stroke: 91.0 x 102.0mm
Piston Displacement: 3980 cc
Compression Ratio: 19.0:1
Air Cleaner: Cyclone type
Power SAE Nett: 72 KW @ 3500 rpm
Torque SAE Nett: 229Nm @ 2000 rpm
Frame: Ladder type, box section
Fuel System (Petrol): Mechanical diaphragm fuel pump and down draft two barrel carburettor
Fuel System (Diesel): Bosch type injection pump with combined governor
Fuel Tank Capacity: 90 Litre
Lubrication System: Forced lubrication by gear pump with full flow filter
Oil Capacity (Petrol): 8.0 Litre
(Diesel) 10.3 Litre

STANDARD EQUIPMENT:

- front & rear heater • dash mounted assist grip, rear passengers assist grip • rear sliding windows • front & rear mud flaps • halogen head lamps • rubber floor mats (standard wagon) • cigarette lighter • front door pockets • rear step • bumper bar incorporating licence plate holder • hand throttle • 2 speed windscreen wipers with washers • fresh air vents • front quarter windows • 2 external & 1 internal rear view mirrors • wind up side windows • fully insulated roof • fully lined inside • 2 interior sun visors • heavy duty front bumper bar • front mounted tow hook • locking petrol cap cover plate • heavy gauge steel plate protecting sump & transfer case • tool kit incorporating 2 tonne capacity jack • AM/FM radio

INSTRUMENTATION:

- ameter • speedometer • odometer • tripmeter • fuel, oil pressure & temperature gauges • parking brake & brake fail indicator lights • heater plug indicator lamp for diesel only • fuel/water separator warning indicator (diesel only)

ADDITIONAL STANDARD EQUIPMENT:

Deluxe Station Wagon Only
• AM/FM radio & cassette player • fabric covered split front bench seat • carpeted throughout • tachometer • rear window wiper & washer • tilt steering • chrome mouldings

SEATING CAPACITY

6 Persons

STEERING

Type: integral power – recirculating ball
Ratio: 19.13:1
Steering Wheel Turns (stop-to-stop): 3.6
Turning Circle: 13.4m
Steering Lock Fitted

SUSPENSION

(Deluxe station wagon)
Front: Semi elliptic – 5 leaf springs
Rear: Semi elliptic – 6 leaf springs
Stabiliser: Front torsion bar
Shock Absorber: Double acting hydraulic telescopic – front & rear
(Standard Station Wagon)
Front: Semi elliptic – heavy duty – 6 leaf springs
Rear: Semi elliptic – heavy duty – 6 leaf springs
Shock Absorber: Double acting hydraulic telescopic – front & rear

TRANSMISSION

Type: 4 Speed forward all synchromesh – 1 reverse
Lever Position: Floor mounted
Gear Ratios:
1 = 4.843
2 = 2.619
3 = 1.516
4 = 1.000
Reverse = 4.843

Transfer Box: 2 Speed helical gear, sliding coupling
Lever Position: Next to transmission shift lever.

Gear Ratios: Low: 1.961:1
High: 1.000:1

Tyres: 750-16-6 PR. LT.

Rim: 5.50 F 16

WEIGHTS	FRONT KG	REAR KG	TOTAL KG
FJ60RG-KO	950	965	1915
HJ60RG-KO	1015	970	1985
FJ60RV-KCQ	960	970	1930
HJ60RV-KCQ	1025	975	2000

Gross Vehicle Mass: – 2730 kg

WARRANTY

12 months or 20,000 km whichever occurs first.