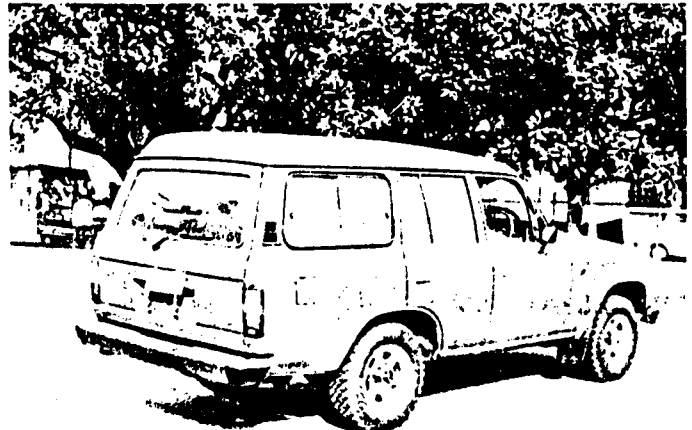
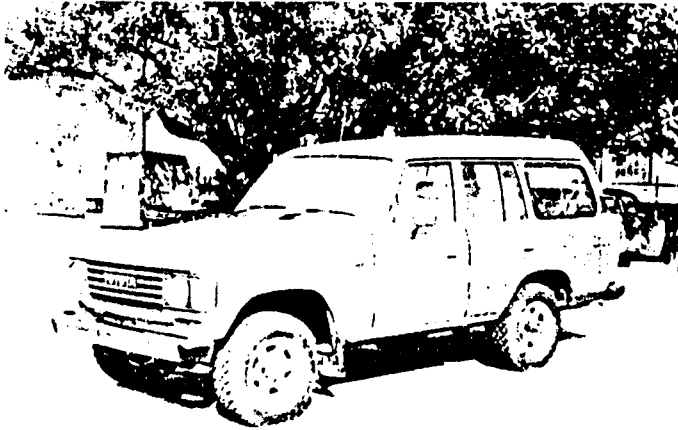




Vehicle Specifications

TOYOTA 28
(REVISED:28.5.84)

MAKE: TOYOTA MODEL: HI-ROOF LANDCRUISER (SAHARA) BODY CODE: 371 67



Variations within the model range:	1	2	3	4
	HJ60RG-MZQ DELUXE	FJ60RG-MZQ DELUXE		
Tare weight of vehicle without any options:	2070	2010		

MAJOR OPTIONS

	CAPACITY	CYLS	MOTIVE POWER	OTHER DETAILS	WEIGHT VARIATION (ADD TO OR SUBTRACT FROM TARE)				
					1	2	3	4	
ENGINES	a	3980	6	DIESEL		STD	N/A		
	b	4230	6	PETROL		N/A	STD		
	c								
	d								
	e								
	f								
OTHER	DESCRIPTION								
	1	5 SPEED MANUAL TRANSMISSION				STD	STD		
	2	POWER STEERING				STD	STD		
	3	SUN ROOF				STD	STD		
	4	AIR CONDITIONING				+25	+25		
	5	TOW BAR				+12	+12		
	6	KANGAROO BAR				+13	+13		
	7	POWER OPERATED WINCH (ELECTRIC)				+51	+51		
	8	POWER OPERATED WINCH (MECHANICAL)				+110	+110		
	9								
	10								
	11								
	12								
	13								
14									
Axle code B					Aggregate weight:	3130	3130		

TOYOTA 28

THIS PLATE IS AFFIXED WITH THE APPROVAL OF THE AUSTRALIAN MOTOR VEHICLE CERTIFICATION BOARD

TOYOTA L/CRUISER S/WAG
 DATE 3/84* FJ60-099323*
 GVM 2845 kg SEATING CAP. 8

THIS VEHICLE WAS MANUFACTURED BY
TOYOTA MOTOR CORPORATION
 TO COMPLY WITH AUSTRALIAN DESIGN RULES NOS.
 1-2-3-4C-5B-6-7-8-11-12-14-15-16-20-22A-24-25A-28A-35A-36

BRAKES FOR MAJOR ENGINE OPTIONS

ENGINE	FRONT BRAKES	REAR BRAKES
3980	POWER/DISC	POWER/DRUM
4230	POWER/DISC	POWER/DRUM

* VARIABLE INFORMATION

TYPICAL ENGINE NUMBER

Engine	Typical no.	Location
a	1053641	4.K.17
b	2F-123456	3.J.8
c		
d		
e		
f		

TYPICAL COMPLIANCE PLATE

(Location: 8.I.22)

SUSPENSION DATA

VERTICAL MEASUREMENT WHEEL CENTRE TO WHEEL ARCH	Front	Rear
	STANDARD	500
MINIMUM	480	445

TYPICAL CHASSIS NUMBER

Model	Chassis no.	Location
1	HJ60-011736	12.V.31
2	FJ60-000031	12.V.31
3		
4		

MAJOR DIMENSIONS

	1	2	3	4
LENGTH	4750	4750		
WIDTH	1800	1800		
HEIGHT	1900	1900		
WHEELBASE	2730	2730		

TYRE AND RIM INFORMATION

Tyre	Rim	Wheeltrack		Model variation			
		F	R	1	2	3	4
205R16C (6P)	6J x 16	1475	1460	STD	STD		
750R16 (6P) LT	5.5F x 16	1475	1460	OPT	OPT		

REMARKS

NOTE: IN ACCORDANCE WITH THE REGULATIONS THE TARE AND AGGREGATE WEIGHT MUST BE DISPLAYED ON THE RIGHT HAND SIDE OF THE VEHICLE.
THIS VEHICLE IS NOT SUITABLE FOR REGISTRATION AS A TAXI-CAB.