



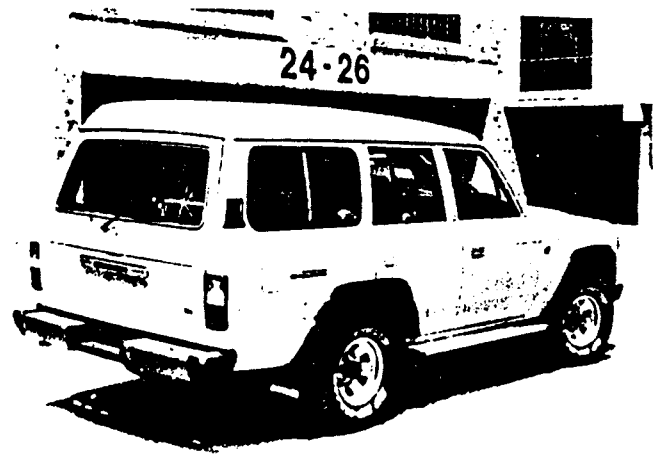
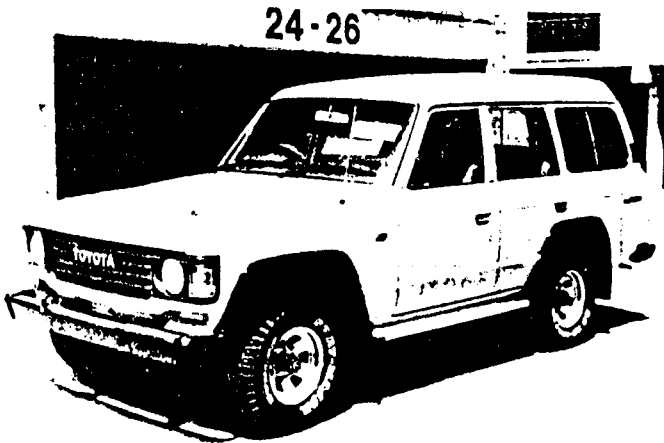
Vehicle Specifications

TOYOTA 57

MAKE: TOYOTA

MODEL: LANDCRUISER (1985)

BODY CODE: 371



Variations within the model range:	1	2	3	4
	FJ62RGMZQ SAHARA	FJ62RGPZQ SAHAMA	HJ60RGMZQ SAHARA	HJ60RGPZQ SAHARA
Tare weight of vehicle without any options:	2060	2120	2110	2170

MAJOR OPTIONS

	CAPACITY	CYLS	MOTIVE POWER	OTHER DETAILS	WEIGHT VARIATION (ADD TO OR SUBTRACT FROM TARE)			
					1	2	3	4
ENGINES	a	3956	6	PETROL	STD	STD	N/A	N/A
	b	3980	6	DIESEL	N/A	N/A	STD	STD
	c							
	d							
	e							
	f							
OTHER	DESCRIPTION							
	1	5 SPEED MANUAL TRANSMISSION			STD	N/A	STD	N/A
	2	4 SPEED AUTOMATIC TRANSMISSION			N/A	STD	N/A	STD
	3	AIR CONDITIONING			+20	STD	+20	STD
	4	POWER STEERING			STD	STD	STD	STD
	5	POWER WINDOWS			N/A	STD	N/A	STD
	6	SUNROOF			STD	STD	STD	STD
	7	TOW BAR			+18	+18	+18	+18
	8	STEEL BULL BAR #			+20	+20	+20	+20
	9	ALLOY BULL BAR #			+10	+10	+10	+10
	10	WINCH			+76	+76	+76	+76
	11							
	12							
	13							
14	# SEE REMARKS							
Axle code: B				Aggregate weight:	3200	3200	3200	3200

THIS PLATE IS AFFIXED WITH THE APPROVAL OF THE AUSTRALIAN MOTOR VEHICLE CERTIFICATION BOARD

TOYOTA L/CRUISER S/WAG A
 DATE 1/85 * FJ62-123456*
 GVM 2910 kg SEATING CAP. 6

THIS VEHICLE WAS MANUFACTURED BY TOYOTA MOTOR CORPORATION TO COMPLY WITH AUSTRALIAN DESIGN RULES NOS.

1-2-3-4C-5B-6-7-8-11-12-14-15-16
 20-22A-24-25A-28A-35A-36

* VARIABLE INFORMATION

TYPICAL COMPLIANCE PLATE

(Location: 8.I.22)

SUSPENSION DATA

VERTICAL MEASUREMENT WHEEL CENTRE TO WHEEL ARCH	Front Rear	
	STANDARD	490
MINIMUM	N/A	N/A

MAJOR DIMENSIONS

	1	2	3	4
LENGTH	4750	4750	4750	4750
WIDTH	1880	1800	1880	1800
HEIGHT	1950	1950	1950	1925
WHEELBASE	2730	2730	2730	2730

TYRE AND RIM INFORMATION

Tyre	Rim	Wheeltrack		Model variation			
		F	R	1	2	3	4
10R-15LT(6PLY)	7JJx15	1515	1500	STD	OPT	STD	OPT
7.50R-16LT (8PLY)	5.50Fx16	1515	1500	OPT	STD	OPT	OPT
205R-16C (6PLY)	6Jx16	1515	1500	N/A	N/A	OPT	STD

REMARKS

BULL BAR: TO ENSURE COMPLIANCE WITH ADR 6 ALL BULL BARS ARE FITTED WITH INDICATOR REPEATER LAMPS.

NOTE: IN ACCORDANCE WITH THE REGULATIONS THE TARE AND AGGREGATE WEIGHT MUST BE DISPLAYED ON THE RIGHT HAND SIDE OF THE VEHICLE.

THIS VEHICLE IS NOT SUITABLE FOR REGISTRATION AS A TAXI-CAB.

BRAKES FOR MAJOR ENGINE OPTIONS

ENGINE	FRONT BRAKES	REAR BRAKES
3955	POWER/DISC	POWER/DRUM
3980	POWER/DISC	POWER/DRUM

TYPICAL ENGINE NUMBER

Engine	Typical no.	Location
a	3F123456	3.J.8
b	1000300	4.K.17
c		
d		
e		
f		

TYPICAL CHASSIS NUMBER

Model	Chassis no.	Location
1	FJ62 002793	12.V.31
2	FJ62 001018	12.V.31
3	HJ60 023991	12.V.31
4	HJ60 023846	12.V.31